

I. Introduction

This protocol is provided for transfection and lentivirus production with **Lenti-X Packaging Single Shots (VSV-G)** (Cat. Nos. 631275–631276), pre-aliquoted, lyophilized, single tubes of Xfect™ Transfection Reagent premixed with an optimized formulation of VSV-G pseudotyped Lenti-X lentiviral packaging plasmids. Use this procedure to transfect lentiviral vector DNA into 293T cells **in a 10-cm dish format**. The amount of reagent and vector in each tube is optimized for lentivirus production in a 10-cm dish. Transfections can be carried out entirely in the presence of serum. Use of tetracycline-free FBS is critical for achieving high titers with this technology.

II. General Considerations

A. Storage and Handling

- Store Lenti-X Packaging Single Shots (VSV-G) at -20°C in the supplied foil pouch containing the desiccant sachet.
- Make sure to return any unused Lenti-X Packaging Single Shots (VSV-G) to the supplied foil pouch containing the desiccant sachet, and store at -20°C .

B. Mock Transfections

Use a plasmid that does not contain your gene of interest. You should include a source of nucleic acids to assemble with the Xfect polymer.

III. Transfection and Virus Production Protocol

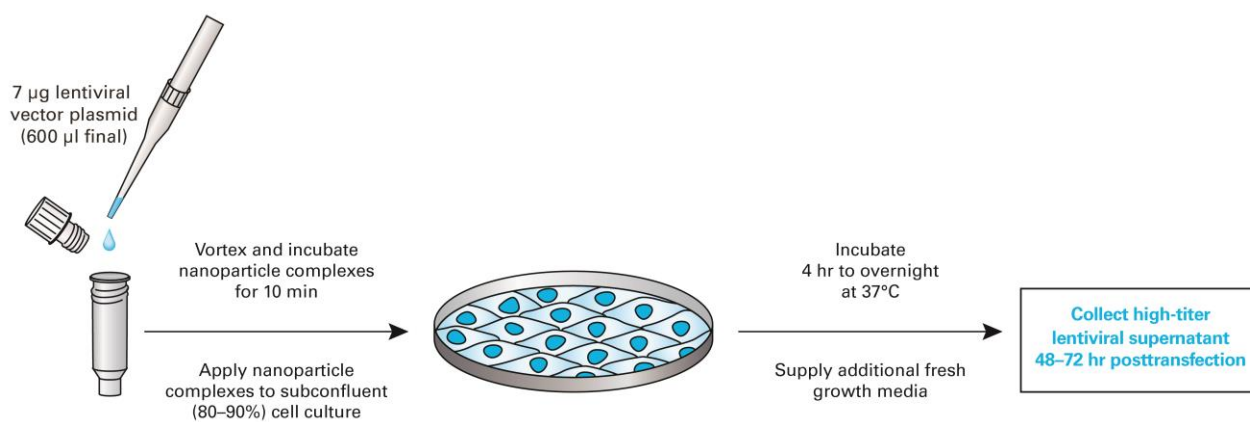


Figure 1. The Lenti-X Packaging Single Shots (VSV-G) protocol.

IMPORTANT: All of the following steps should be performed in a sterile tissue culture hood. Lentivirus requires the use of a Biosafety Level 2 facility. Pseudotyped lentiviruses packaged from HIV-1-based vectors are capable of infecting human cells. Know and use appropriate safety precautions.

- Transfections should be performed using **10-cm tissue culture dishes**. Tetracycline-free FBS should be used in the transfection medium and in the medium used to collect the virus.
- One day prior to the transfection, plate cells in 8 ml of complete growth medium so that the cells will be 80–90% confluent at the time of transfection.

Lenti-X™ Packaging Single Shots (VSV-G) Protocol-At-A-Glance

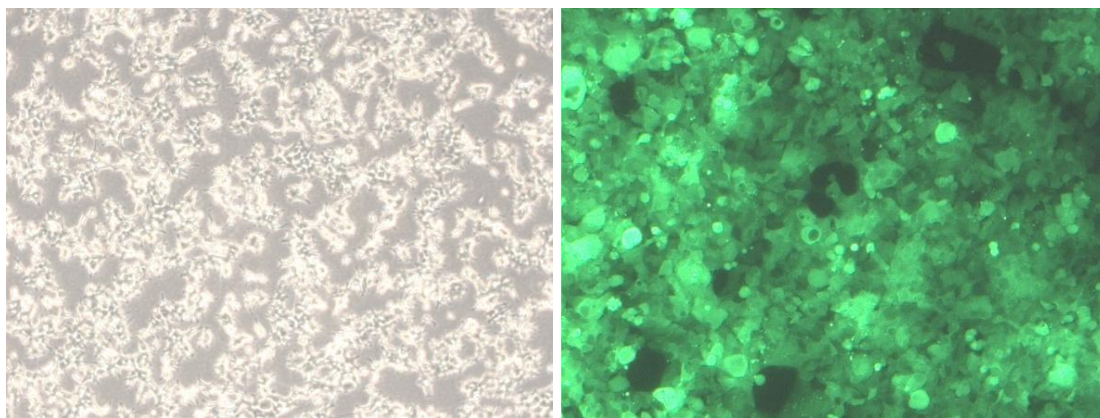


Figure 2. Optimal density of Lenti-X 293T cells at point of transfection (left panel) and harvest time (right panel), shown here using a transfer vector containing ZsGreen1.

NOTE: To achieve the highest titers it is critical to pay close attention to the transfection. You may want to perform a co-transfection with a lentiviral vector that contains a fluorescent protein. You should be able to achieve transfection efficiencies of greater than 90%.

1. Approximately 24 hr before transfection, seed 4–5 x 10⁶ Lenti-X 293T cells/10-cm plate, in 8 ml of growth medium. Make sure that the cells are plated evenly. Incubate at 37°C, 5% CO₂ overnight. Continue to incubate the cells until you are ready to add the transfection mixture in Step 5. The cells should be 80–90% confluent at the time of transfection.
2. In a sterile microfuge tube, dilute 7.0 µg of your lentiviral vector plasmid DNA with sterile water to a final volume of 600 µl. Mix thoroughly by vortexing.

NOTE: Always dilute your DNA in water prior to adding it to a Lenti-X Packaging Single Shot (VSV-G). Do not add water and DNA separately (since undiluted DNA should not be mixed with Xfect Transfection Reagent).

3. Add the 600 µl of diluted DNA to a tube of Lenti-X Packaging Single Shots (VSV-G), replace the cap, and vortex well at a high speed for 20 sec. The pellet should dissolve completely.

NOTE: In some cases some insoluble material may be visible after vortexing. This material does not have a negative effect on transfection efficiency or virus yields.

4. Incubate the samples for 10 min at room temperature to allow nanoparticle complexes to form. After the 10 min incubation, centrifuge the tube for 2 sec to bring the sample to the bottom of the tube.

NOTE: Sample tubes can be inserted into 1.5 ml microfuge tubes for brief centrifugation.

5. Add the entire 600 µl of nanoparticle complex solution dropwise to the 8 ml of cell culture prepared in Step 1. Rock the plate gently back and forth to mix.

NOTE: It is normal for the medium to change color slightly upon addition of nanoparticle complex solution.

6. Incubate the cells at 37°C supplied with 5% CO₂.

NOTE: A 4 hr incubation with Xfect-DNA nanoparticles is sufficient for optimal transfection. Incubation may be continued overnight for convenience but does not generally increase transfection efficiency or titer.

7. After 4 hr to overnight, add an additional 6 ml of fresh complete growth medium and incubate at 37°C; 5% CO₂ for an additional 24–48 hr. Virus titers will generally be highest 48 hr after the start of transfection.

Lenti-X™ Packaging Single Shots (VSV-G) Protocol-At-A-Glance

- Harvest the lentiviral supernatants and pool similar stocks, if desired (a 48 hr stock may be stored at 4°C until a 72 hr stock is harvested).

CAUTION: Supernatants contain infectious lentivirus.

Centrifuge briefly (500 x g for 10 min) or filter through a 0.45 µm filter to remove cellular debris.

NOTE: The filter used should be made of cellulose acetate, or polysulfonic (low protein binding), instead of nitrocellulose. Nitrocellulose binds proteins present in the membrane of lentivirus and destroys the virus.

- Verify virus production using Lenti-X GoStix™ (for details, see the [Lenti-X GoStix Protocol-at-a-Glance](#)). Alternatively, titrate the virus stock, then use the virus to transduce target cells, or store at -80°C.

NOTE: Titters can drop as much as 2–4 fold with each freeze-thaw cycle

- For protocols describing how to transduce your target cells or create frozen stocks, see the [Lenti-X Lentiviral Expression Systems User Manual](#).

IV. Expected Results

Figure 3 shows typical results for transfection efficiency and infectious titer (IFU/ml) observed when using the Lenti-X Packaging Single Shots (VSV-G) according to the protocol described in Section III.

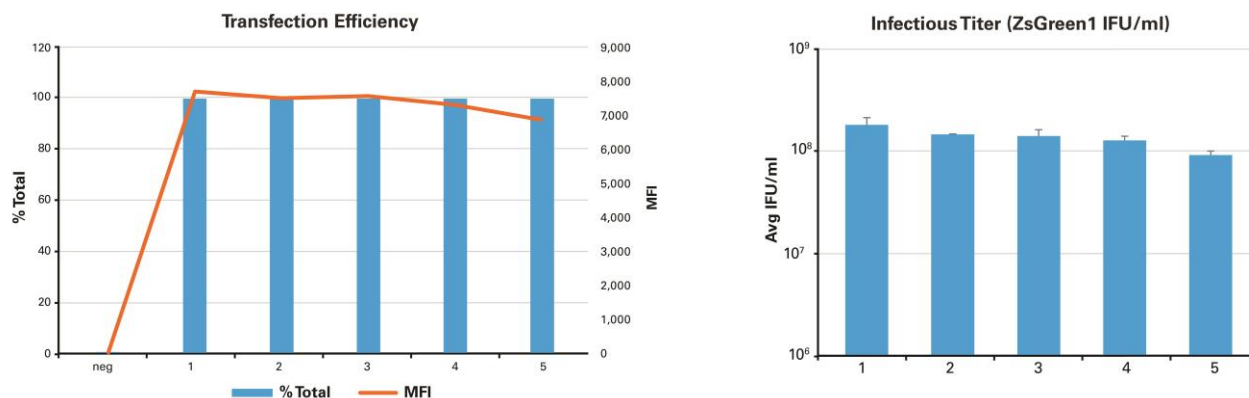


Figure 3. Transfection efficiency and infectious titer. The Lenti-X Packaging Single Shots (VSV-G) Protocol was performed on five samples. The transfection efficiencies for each sample were measured by FACS (left panel), and shown to be ~100%. Clarified supernatant was then serially diluted and titrated using HT1080 cells in the presence of 6 µg/ml polybrene. Transduced cells were analyzed by FACS analysis at 72 hr post-transduction (right panel). Titters were calculated using culture volumes which resulted in cell populations transduced at <10% efficiency, to ensure one copy per cell. The resulting titers were all ~1 x 10⁸ IFU/ml.

Contact Us For Assistance	
Customer Service/Ordering	Technical Support
Telephone: 800.662.2566 (toll-free)	Telephone: 800.662.2566 (toll-free)
Fax: 800.424.1350 (toll-free)	Fax: 650.424.1064
Web: www.clontech.com	Web: www.clontech.com
E-mail: orders@clontech.com	E-mail: tech@clontech.com

Notice to Purchaser

Clontech® products are to be used for research purposes only. They may not be used for any other purpose, including, but not limited to, use in drugs, *in vitro* diagnostic purposes, therapeutics, or in humans. Clontech products may not be transferred to third parties, resold, modified for resale, or used to manufacture commercial products or to provide a service to third parties without prior written approval of Clontech Laboratories, Inc.

Lenti-X™ Packaging Single Shots (VSV-G) Protocol-At-A-Glance

Your use of this product is also subject to compliance with any applicable licensing requirements described on the product's web page at <http://www.clontech.com>. It is your responsibility to review, understand and adhere to any restrictions imposed by such statements.

Clontech, the Clontech logo, GoStix, Lenti-X, and Xfect are trademarks of Clontech Laboratories, Inc. All other marks are the property of their respective owners. Certain trademarks may not be registered in all jurisdictions. Clontech is a Takara Bio Company. ©2015 Clontech Laboratories, Inc.

This document has been reviewed and approved by the Clontech Quality Assurance Department.