

## 2x Beetle Lysis-Juice (1 02 516)

### Components included:

<b>Beetle Lysis-Juice 2x</b>	<b>100ml</b> Dual concentrated buffer for Screening with firefly luciferase, without substrate. <b>Store at +4°C</b>
<b>D-Luciferin</b>	<b>1 vial (A) → for 100 ml Beetle Lysis-Juice 2x</b> p. a. free acid, firefly (synth.). <b>Store at -20°C</b>
<b>ATP</b>	<b>1 vial (B) → for 100 ml Beetle Lysis-Juice 2x</b> Adenosintriphosphat, <b>Store at +4°C</b>

### Reconstruction:

Beside the black buffer-bottle the kit is equipped with two further tubes which are labelled with **A** D-Luciferine and **B** ATP. D-Luciferine and ATP are white powders which have to be dissolved and mixed into the buffer by shaking gently. Afterwards the finished measuring buffer can be aliquoted and long-term stored at -80°C.

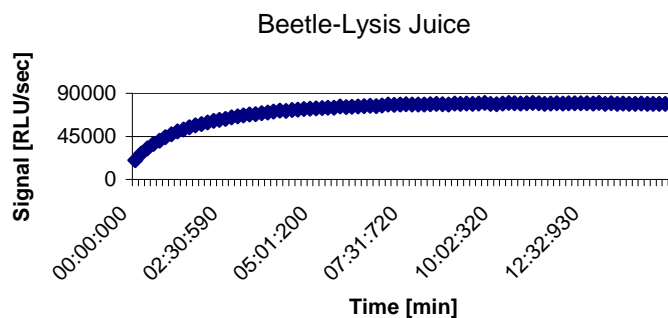
*Note: Do not combine this buffer with marine luciferases because the buffer contains triton. The combination of triton with the substrate of marine luciferases (Coelenterazine) leads to autoluminescence.*

### Standard Protocol

Program Luminometer:

For the measuring we suggest measurement duration of 5 sec. and a delay of 2 sec. for each sample.

- 1.) Add **Beetle Lysis-Juice 2x** to the vial in ratio 1:1 of your cells in medium (Example: 100µl cells in medium add 100µl Beetle Lysis-Juice 2x).
- 2.) To make sure the lysis was completed please mix the dissolved cells 3 times in the pipette tip.
- 3.) After that incubate the solution at least for 5 min. (up to 20 min. possible).
- 4.) Measurement starts after 2 sec. delay for 5 sec. duration.

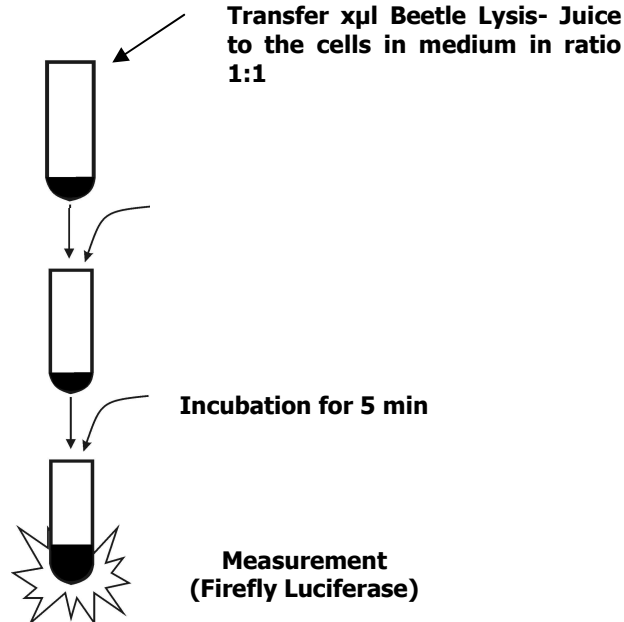


## 2x Beetle Lysis-Juice (1 02 516)

### Standard procedure:

#### **Program Luminometer**

(delay 2sec./measurement duration 5sec)



### Optional: parallel measurement in Duo- or Triple-Well System (Firefly/ Renilla/ Gaussia/ AP/ $\beta$ -Gal)

Split the Cell Lysate and transfer to different tubes for measuring several luciferases in one sample.

